

150+ Inspiring best buys
for your home

WIN!
A **€1,000**
VOUCHER FROM
SONAS

HOUSE AND home

Ireland's Bestselling Interiors Magazine*

JULY/AUGUST 2021
€4.50 (STGE3.50)

RENOVATION
INSPIRATION

ADVICE FROM FOUR
IRISH HOMEOWNERS

PROJECT STAYCATION

Breathe new life
into your home
this summer



It's time to decorate!

*New ideas for space,
pattern and colour*

BATHROOMS FOCUS
TEN GOLDEN DESIGN RULES

The *Outdoors* special

FROM SOFAS TO RUGS, PARASOLS TO FIRE PITS,
EVERYTHING YOU NEED TO KNOW, DO AND BUY TO
GET YOUR OUTSIDE SPACE IN SHAPE FOR SUMMER



“We’ve all now realised the immense importance of outdoor living and bringing the inside out in design”

Building your own house is no mean feat but one that interior designer Clodagh Doyle and her husband Ivan have achieved with distinction

WORDS CIARA ELLIOTT PHOTOGRAPHY EVA BLAKE

FACT FILE

Homeowners:
Clodagh and Ivan Doyle,
children Odhran, 19 and
Cadhla, 13 and dogs,
Lish, Lucky and Bear

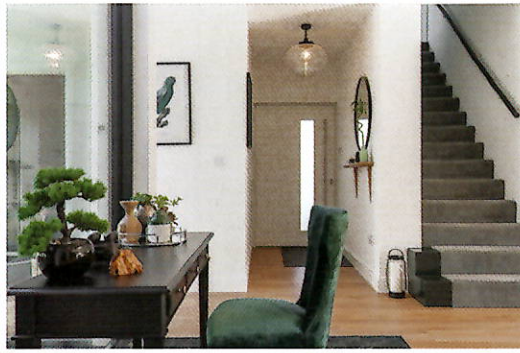
House location:
Enniskerry, Co Wicklow
House size: 250 sq m
Architect: Declan Duffy,
T: 087 9572978

**Interior design
and build:** Placelift,
Placelift.ie
Windows:
DK Windows & Doors,
Dkwindows.ie
Floors: Morgan Doyles
Ltd, Morgandoyles.com
Plumbing: BM Plumbing
Solutions, Bmplumbing.ie

Woodwork: VF
Carpentry, Facebook.
com/vf-carpentry

INTERNAL COURTYARD AND HALLWAY

“We have an extra wide front entry door which is highly practical,” says homeowner and interior designer Clodagh Doyle who lives here with her husband Ivan and their three children. “Our main entry hallway is short so on entering the space, you can see the courtyard which is open to the elements to the right. It was very integral to the build.” Both sides of the courtyard lead to bedroom spaces for the children and to the left they have their kitchen, dining and living spaces all clearly defined in terms of flow and function. DETAILS Joinery in the corridor is painted in Inchyra Blue from Farrow-ball.com with tiles from Tilestyle.ie. Flooring is a high quality wide-plank laminate from Morgandoyles.com. The desk and the velvet chair were both sourced from Flanagankerins.ie. The chair was re-upholstered with fabric from Materialworldireland.com



SNUG One of Clodagh's favourite places to sit and get away from it all is in the family's homely snug adjoining the main living space. A small grey sofa and a media unit with wall art, decorative shelving and house plants create a cosy vibe in here

DETAILS The sofa is from Next.ie with a side table, Foxfordwoollenmills.com and cushions, Scatterbox.ie. The lights are from Houseoflights.ie and framed prints from Desenio.ie and Michaelmurphy.ie. The downstairs space is painted throughout in All White from Farrow-ball.com

TERRACE AREA The living-dining space opens seamlessly onto decking and an outdoor living area connecting to the garden. "The orientation was always so important so that we could make the most of the sun all day long," says Clodagh. "As the sun moves around our home towards the evening, this is where you will find us. Our plan is to place an awning

on this space and a wall heater so that we can maximise this space"

DETAILS Planters, hedges, plants and flowers are all from the local Windyridgegardencentre.ie. The composite decking is from Morgandoyles.com. Custom-designed garden furniture was made by Placelift.ie. The cushions and throws were bought at Hm.com, Next.ie and Tkmaxx.ie



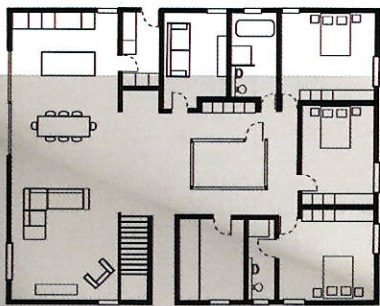
SELF-BUILD DESIGN TIP

"Carefully consider how you can seamlessly create close connections

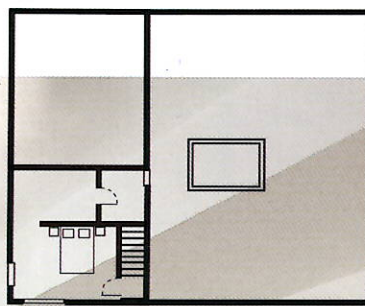
from your inside to your outside spaces. All too often the outdoor living aspects are too far down the priority or wishlist. Our courtyard was one of our bravest moves, but the rewards have been enormous"



KITCHEN The family's kitchen is modern and streamlined with a double-sided island with a quartz worktop and geometric tiled backsplash. A full height window looks out to the paved outdoor living space. **DETAILS** The kitchen is the handle-less Malmo style from the Burbidge collection at the Panellingcentre.ie



Ground floor



First floor



MASTER BEDROOM The entire upstairs is dedicated to the master bedroom with its walk-in-wardrobe and master en-suite. Here it is an uncomplicated design, with a super kingsize bed, side tables and a relaxing corner with chair and foot pouffe. The two full height windows provide views to the garden and surrounding countryside **DETAILS** Bed and bedding from Morgandoyles.com and the Paul Costello Collection, Dunnesstores.com. Cement pendants either side of the bed are from Meadowsandbyrne.com

CADHLA'S BEDROOM Clodagh's 13-year-old daughter Cadhla's bedroom is on the ground floor **DETAILS** The bed and headboard are Morgandoylesfurniture.com with cushions from Scatterbox.ie. The lamp is Dunnesstores.com with bedside locker Meadowsandbyrne.com



CLODAGH'S TOP FIVE DESIGN TIPS FOR PLANNING A SELF-BUILD

1 KNOW YOUR STYLE Do you like traditional or modern or a mix of both? Browsing online should help you identify the types of homes that you are drawn to. Align your style with your architect and arrange a pre-planning consultation with your local authority as this might highlight any possible design flaws early on. If you are self-building in a rural setting, you do not necessarily have to build a farmhouse style home as most planners are receptive now to modern designs – as long as they are sympathetic to the landscape.

2 DESIGNED FOR YOU By thinking about how you live now and what works and what does not, you will get an idea of what to include on your wish list. Your new home should spark joy and provide you with optimum comfort – ultimately making your life easier. Be mindful of creating a cohesive style throughout your new home. A consistent colour scheme will seamlessly blend spaces, for instance. Be careful with lighting and finishes in any one space particularly open plan, to ensure that they are singing off the same hymn sheet. Remember it is your house, so it should reflect your personality and those living in it.

3 KEEP ON PLANNING Every detail matters. By paying close attention to your electrical and lighting plans you can ensure that they will suit your specific requirements. Think about where you plan on placing your Christmas tree and question if you will have ample power points. Plan storage throughout with built-in solutions. Spatial planning is a must for every room in your self-build to ensure that you create a good flow.

4 BE BRAVE You are being presented with the ideal opportunity to let your creative juices flow and give your new home the 'wow factor'. You can choose to play it safe, or you can be brave (as your budget allows). There are many areas where you can try something different or incorporate a focal point. It may be creating a split-level home or a feature fireplace or a bespoke media unit. For us it was our courtyard.

5 GARDEN MATTERS Self-building affords you the privilege of closely connecting your home and garden. From the outset consider the aspect and orientation of your home and how you can seamlessly create close connections from inside to outdoor spaces to encourage this flow.